

Cubase/Nuendo Standard Matrix Profile

Setup and Quick Start Guide



Introduction

The first part of this tutorial details how to setup Cubase/Nuendo with your SSL Matrix. The second part details the commands assigned to this profile.

This tutorial assumes that you have already installed all the necessary Matrix related software on your computer and that there is both a working network and USB connection from your DAW computer to the Matrix. If you have yet to configure this part of your system please refer to the **Matrix 2 Owner's Manual** before continuing.

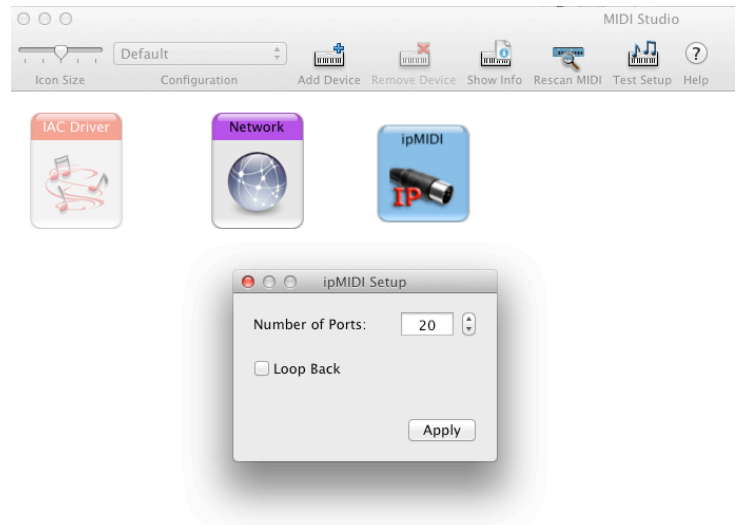
Installing the profile

The Cubase/Nuendo Standard profile is automatically installed when you update your Matrix console software to **V2.0/6**. In addition, it is recommended that you have the latest version of the Matrix remote application installed. Go to the SSL website › Matrix Product page › **Downloads** to make sure you are up-to-date.

ipMIDI Setup

Apple Macintosh OSX

- 1) Close all applications using MIDI
- 2) Open AudioMidi Setup (MacintoshHD > Applications > Utilities > Audio MIDI Setup)
- 3) Open the MIDI Window (Audio MIDI Setup > Window > Show MIDI Window)
- 4) Double click the ipMIDI icon
- 5) Set number of ports to 9 and ensure that 'Loopback' is **not ticked** and then press 'Apply'



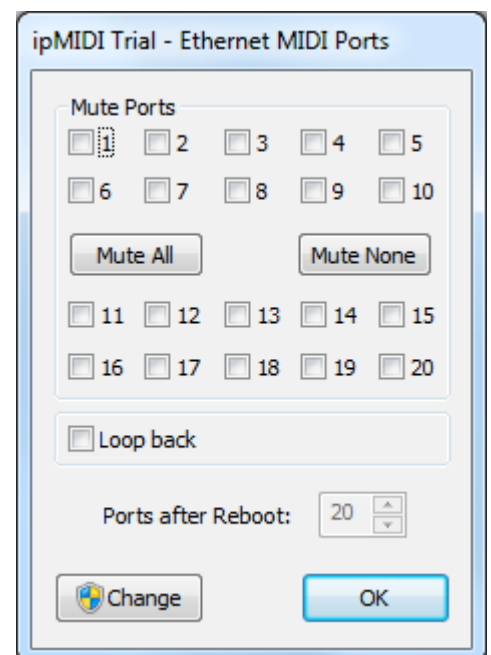
OR

Microsoft Windows OS

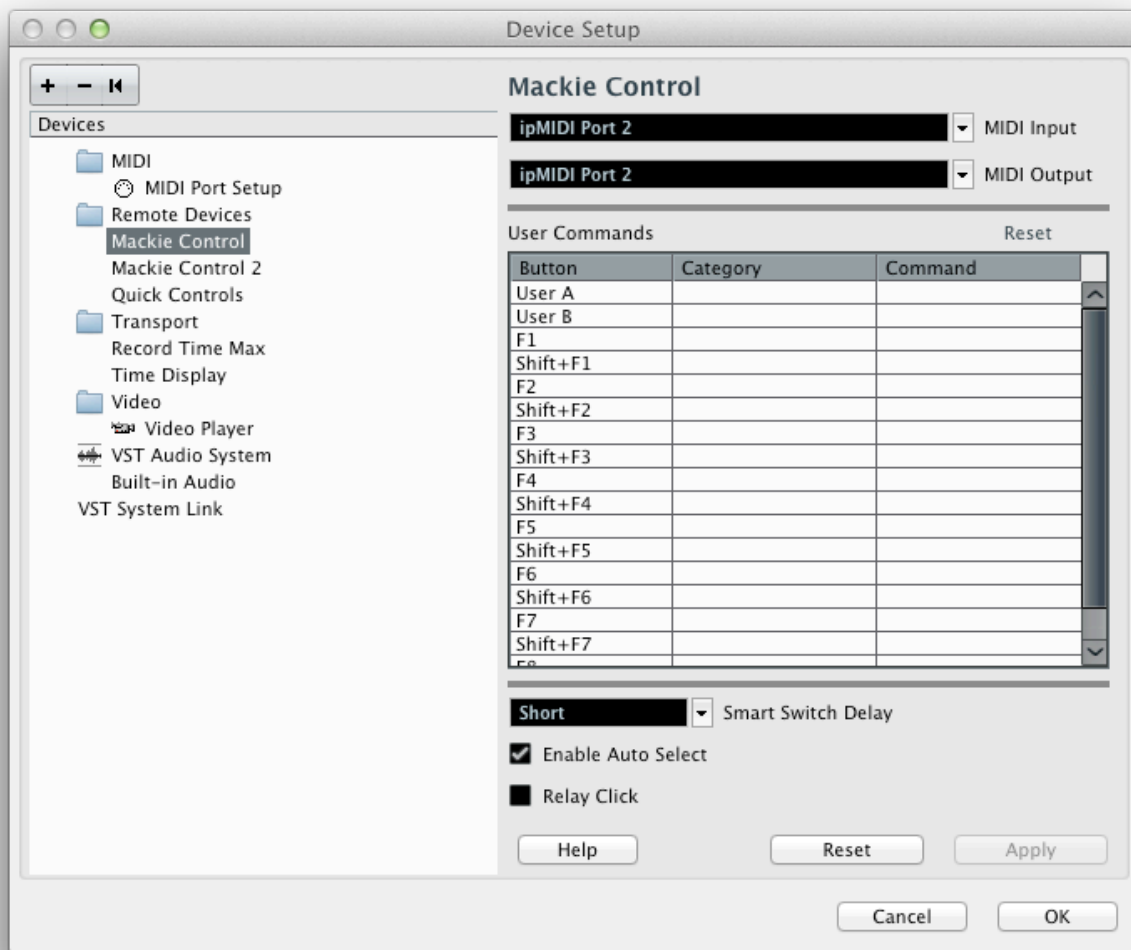
This setup information covers Windows XP, Vista and Windows 7 and 8 (32+64-bit)

- 1) Launch the ipMIDI Monitor application (Start > Menu > Programs > ipMIDI)
- 2) Ensure Ports 1 to 9 are not muted
- 3) Un-tick 'Loop Back'
- 4) Set 'Ports after Reboot' to 9 and ensure that 'Loopback' is **not ticked** and then press 'OK'

Note: If you are opening up Ports for the first time, after Rebooting your computer, these will be 'muted'. Be sure to open ipMIDI back up and untick the muted Ports



Setting up Cubase/Nuendo



Device Setup

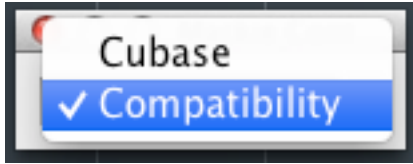
Control surfaces are setup in Cubase/Nuendo in the **Devices > Device Setup > Remote Devices** menu. In this example we will setup Cubase/Nuendo for operation on DAW layer 1 of Matrix.

- 1) Click the '+' button to add a new device
- 2) Choose 'Mackie Control'
- 3) Set MIDI Input to ipMIDI Port 2 and then set MIDI Output to ipMIDI Port 2 also and click 'Apply'
Note: Cubase/Nuendo requires you to setup Port 2 before Port 1 for correct operation
- 4) Again, click the '+' button to add second Mackie Control
- 5) Set MIDI Input to ipMIDI Port 1 and then set MIDI Output to ipMIDI Port 1 also and click 'Apply'
- 6) Press 'OK' to exit this window

Compatibility Mode

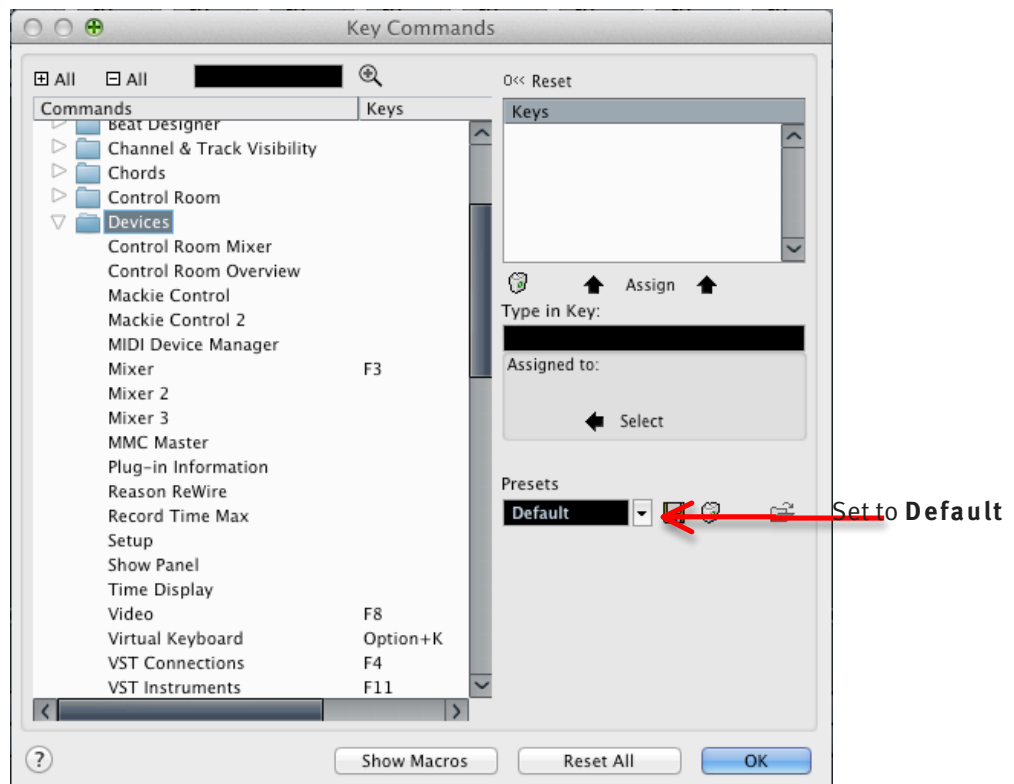
In Cubase 7.5, Steinberg altered certain Mackie Control functions (including Page Up and Page Down), so that they no longer operate as they did before 7.5.

Therefore, in order to make this profile work correctly, if you are running Cubase 7.5 or above please ensure you have setup the Mackie Control 2 in '**Compatibility**' mode. This is set in the **Devices** menu > **Mackie Control 2**. A very small drop-down box will appear. Change it from '**Cubase**' to '**Compatibility**'.



Key Commands

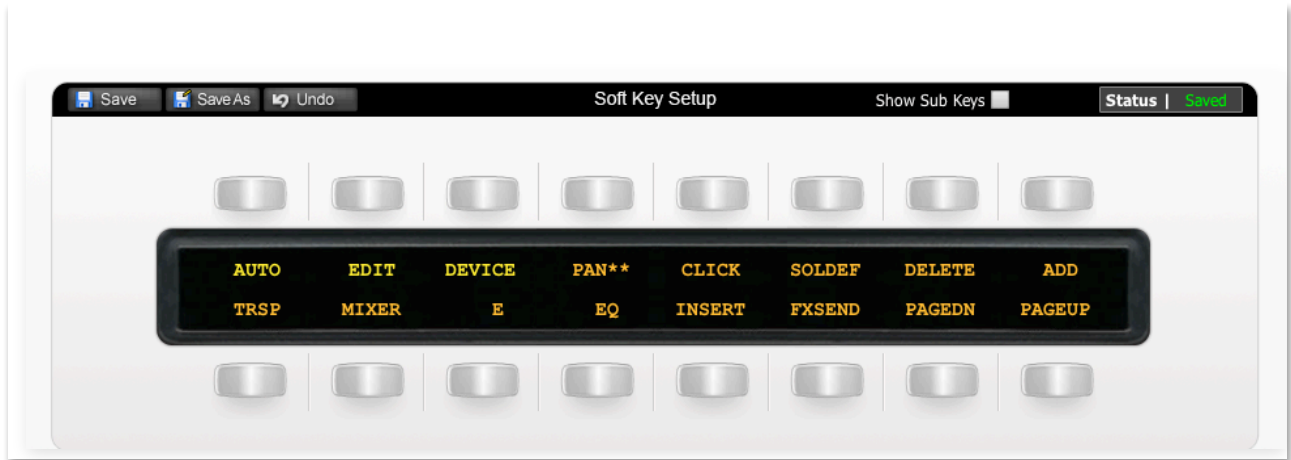
As the Cubase/Nuendo Standard profile contains a mixture of MCU commands and USB Keyboard shortcuts, it is important that you set the '**Presets**' option in the **Key Commands setup** to '**Default**' so that this profile works correctly. This is set in the **File** menu > **Key Commands...**



Matrix Setup

Go to the Matrix Remote application and ensure the selected profile for DAW 1 is '**Cubase/Nuendo Standard**'.

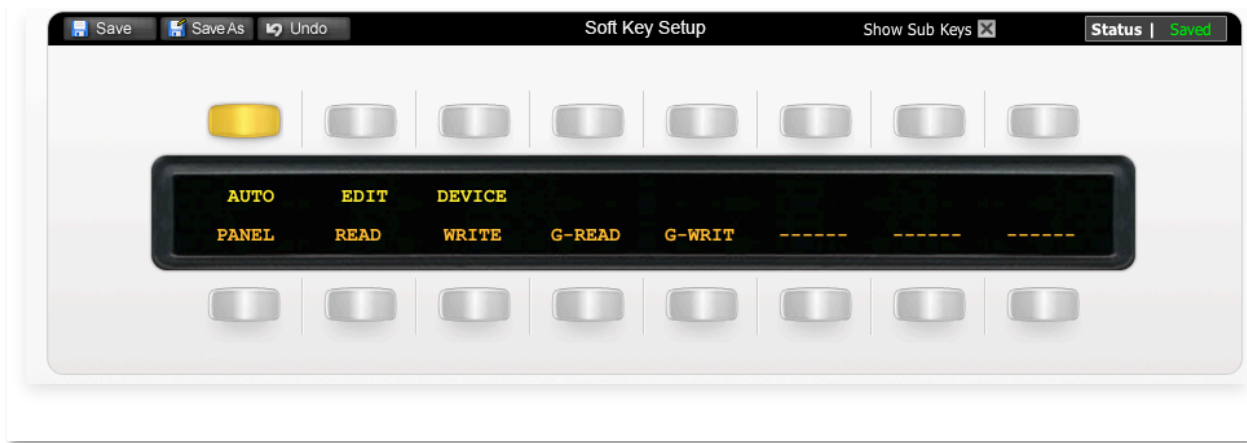
Default



Above you can see the assignments for Matrix's Default key set. You are in the Default Key Set when the User 1, User 2, User 3 or User 4 keys are not selected.

AUTO	Opens the Automation Submenu
EDIT	Opens the Edit Submenu
DEVICE	Opens the Device Submenu
PAN**	Sets the V-Pots as Pan controls and shows the values
SOLDEF	Solo Defeat
DELETE	Deletes selected Regions/Notes/Automation Data
ADD	Adds Marker at cursor position
TRSP	Shows/hides transport panel
MIXER	Shows/hides the Mixer
E	Opens channels view
EQ	V-Pots control the channel EQ
INSERT	V-Pots assign and control plug-ins on the selected track
FXSEND	V-Pots control Send levels
PAGEDN	Pages backwards through plugins or other functions with multiple parameters
PAGEUP	Pages forwards through plugins or other functions with multiple parameters

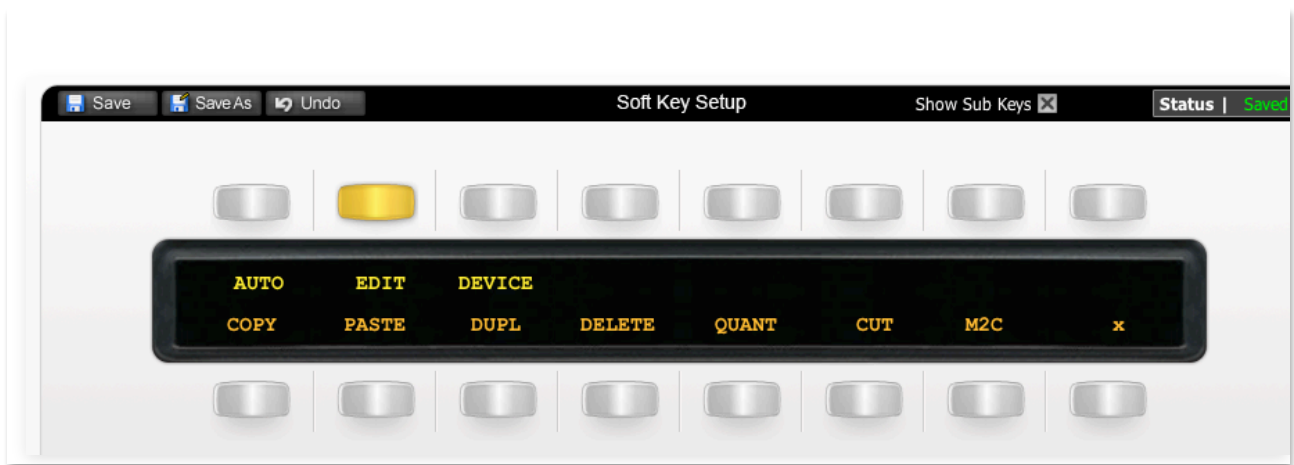
The AUTO Submenu



The image above shows the assignments for the Auto Submenu.

PANEL	Shows the Automation Panel
READ	Set selected track to Read mode
WRITE	Set selected track to Write mode
G-READ	Toggles automation Read status for all tracks
G-WRIT	Toggles automation Write status for all tracks
---	<i>Unassigned</i>
---	<i>Unassigned</i>
---	<i>Unassigned</i>

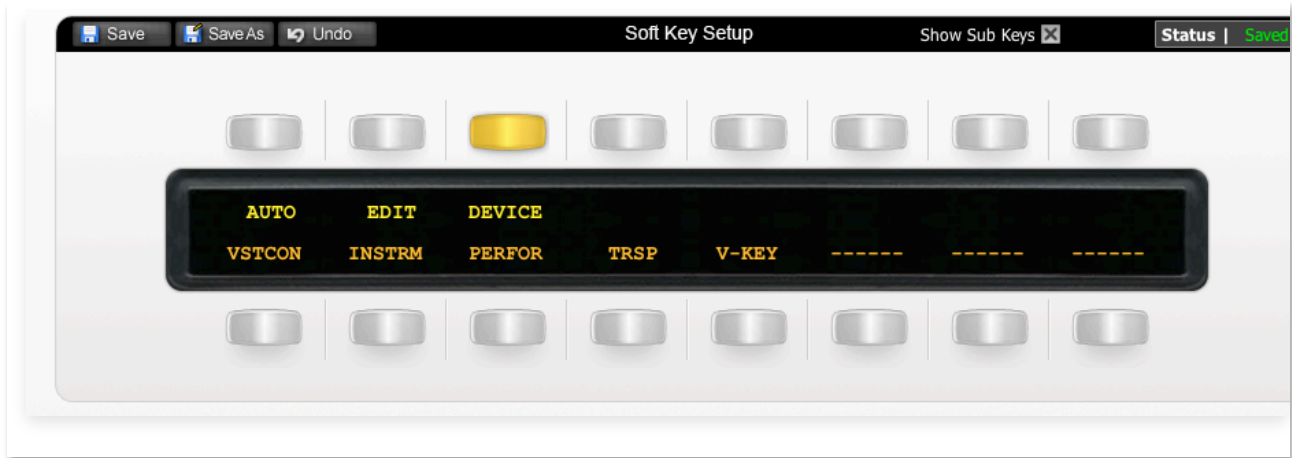
The Edit Submenu



The image above shows the assignments for the Edit Submenu.

COPY	Copy selected region/event/note
PASTE	Paste selected region/event/note
DUPL	Duplicate selected region/event/note
DELETE	Delete selected region/event/note
QUANT	Quantise selected region/event/note
CUT	Cut selected region/event/note
M2C	Set locators to selected region/event
X	Crossfade

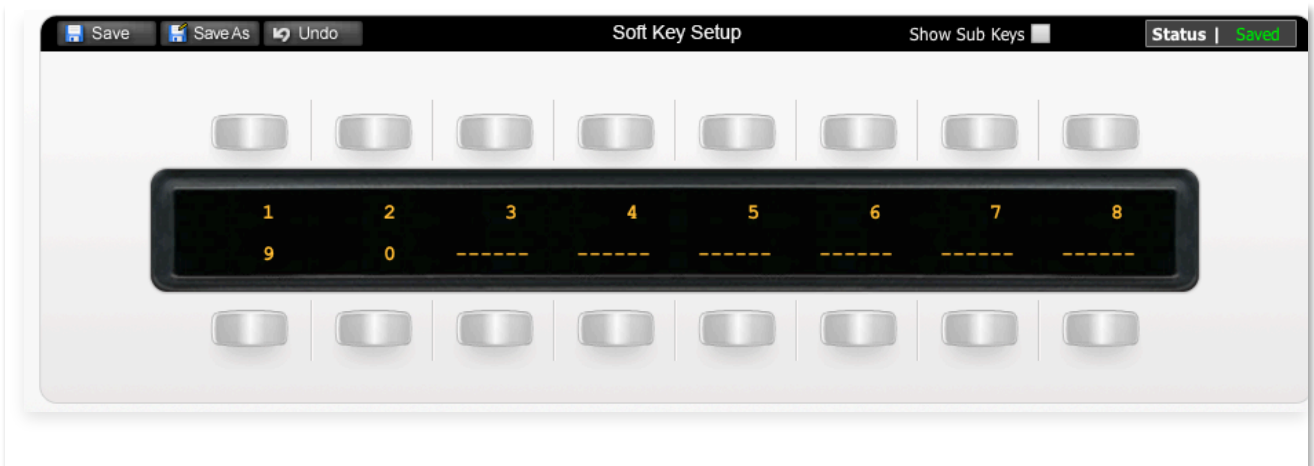
The Device Submenu



The image above shows the assignments for the Device Submenu.

VSTCON	Opens VST Connections window
INSTRM	Opens VST Instruments window
PERFOR	Opens VST Performance window
TRSP	Opens Transport window
V-KEY	Opens Virtual Keyboard
---	<i>Unassigned</i>
---	<i>Unassigned</i>
---	<i>Unassigned</i>

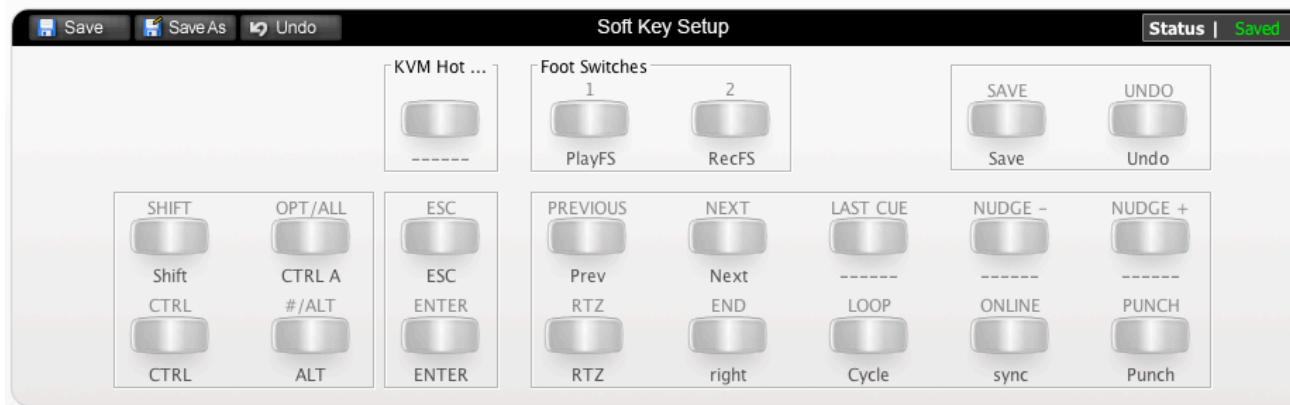
User 1



The image above shows the default layout for the Matrix's User Layer 1. This key set provides access to the same numbers as on your numeric keypad.

1	Numeric Keypad 1
2	Numeric Keypad 2
3	Numeric Keypad 3
4	Numeric Keypad 4
5	Numeric Keypad 5
6	Numeric Keypad 6
7	Numeric Keypad 7
8	Numeric Keypad 8
9	Numeric Keypad 9
0	Numeric Keypad 10

Transport / Utilities



The image above shows the assignments for Matrix's transport/utilities section.

SHIFT	Keyboard Shift (follow key state)
CTRL	Keyboard Ctrl (follow key state)
CTRL A	Keyboard Ctrl+A
ALT	Keyboard Alt/Option (follow key state)
ESC	Keyboard Escape
ENTER	Keyboard Enter
PREV	Locate to previous marker
NEXT	Locate to next marker
RTZ	Locate to session start
RIGHT	Locate to session end
CYCLE	Engage/disengage loop function
NUDGE -	<i>Unassigned</i>
NUDGE +	<i>Unassigned</i>
SYNC	Turn sync on
PUNCH	Engage/disengage punch-in record mode

List of MCU Functions

The Cubase/Nuendo profile contains a mixture of MCU commands and USB keyboard shortcuts. To help you see how we have renamed the commands, see the table below.

BLACK TEXT = MCU command

RED TEXT = USB keyboard shortcut

DAW CMD / KEYBOARD SHORTCUT	SOFTKEY LABEL (RE-NAMED)
-	AUTO (Menu)
-	EDIT (Menu)
-	DEVICE (Menu)
Pan + Name/Value	PAN**
C	CLICK
Solo Defeat	SOLDEF
backspace	DELETE
Add	ADD
F2	TRSP
Mixer	MIXER
Edit	E
EQ	EQ
Inserts	INSERT
FX Sends	FXSEND
Page Down	PAGEDN
Page Up	PAGEUP
F6	PANEL
Read	READ
Write	WRITE
Alt+R	G-READ
Alt+W	G-WRIT
Ctrl+C	COPY
Ctrl+V	PASTE
Ctrl+D	DUPL
backspace	DELETE

Q	QUANT
Alt+X	CUT
P	M ₂ C
X	X
F₄	VSTCON
F₁₁	INSTRM
F₁₂	PERFOR
F₂	TRSP
Alt+K	V-KEY
Numeric Keypad 1	1
Numeric Keypad 2	2
Numeric Keypad 3	3
Numeric Keypad 4	4
Numeric Keypad 5	5
Numeric Keypad 6	6
Numeric Keypad 7	7
Numeric Keypad 8	8
Numeric Keypad 9	9
Numeric Keypad 0	0
Shift (follow key state)	SHIFT
Ctrl (follow key state)	CTRL
Ctrl A	CTRL A
Alt (follow key state)	ALT
Esc	ESC
Enter	ENTER
Previous	PREV
Next	NEXT
,	RTZ
Right Arrow Key	RIGHT
Cycle	CYCLE
Nudge -	NUDGE -
Nudge +	NUDGE +
Sync	SYNC
Punch	PUNCH